

BRV

Anti-rotation torque reaction arms

- ✘ **BRV**
Anti-rotation torque reaction arms
- ✘ **BRV-SA**
Anti-rotation torque reaction arms for articulated support
- ✘ **High torque BRV**
High torque anti-rotation reaction arms

BRV

Anti-rotation torque
reaction arms

When useful?

- Both perpendicular and parallel tightening direction
- Vertical installation

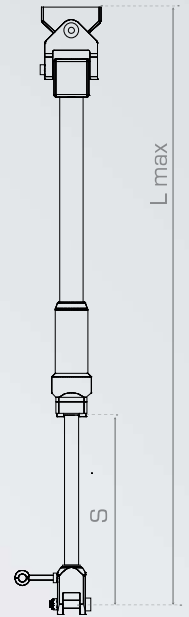


Features

- ✓ Carbon fiber layering optimized for torsional loads
- ✓ High smoothness
- ✓ Recirculating ball bushing
- ✓ Anti-rotation system

Complements:

- + Tool holder
- + Balancer
- + Crane systems



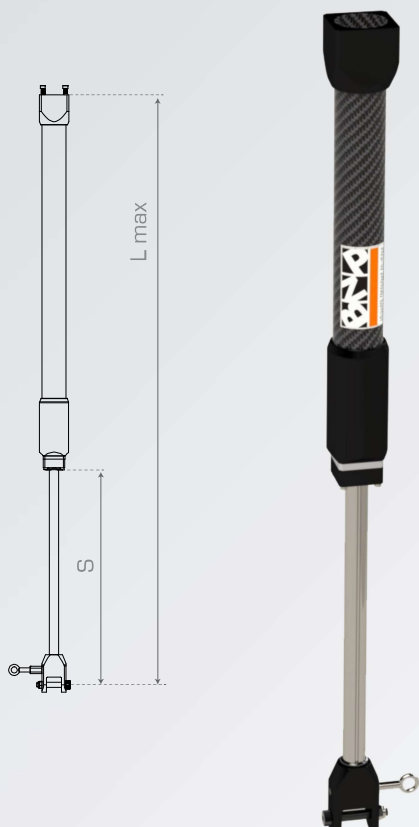
Arm	BNP p/n	Max torque		L max		Stroke (S)		Weight	
		Nm	f.lb	mm	in	mm	in	Arm	To balance
								Kg (Lb)	Kg (Lb)
BRV15 600/150	030.0001.000	15	11,06	600	23,62	150	5,90	1,00 (2,20)	0,35 (0,77)
BRV15 800/300	030.0002.000	15	11,06	800	31,49	300	11,81	1,20 (2,64)	0,50 (1,10)
BRV40 600/150	030.0003.000	40	29,50	600	23,62	150	5,90	1,90 (4,19)	0,70 (1,54)
BRV40 850/300	030.0004.000	40	29,50	850	33,46	300	11,81	2,25 (4,96)	1,00 (2,20)
BRV40 1500/600	030.0005.000	40	29,50	1500	59,05	600	23,62	3,00 (6,61)	1,60 (3,53)
BRV80 900/300	030.0006.000	80	59,00	900	35,43	300	11,81	3,30 (7,27)	1,50 (3,31)
BRV80 1500/600	030.0007.000	80	59,00	1500	59,05	600	23,62	4,35 (9,59)	2,50 (5,51)
BRV80 2100/900	030.0008.000	80	59,00	2100	82,67	900	35,43	5,35 (11,79)	3,40 (7,49)



Standard purchase order: BRV + tool holder + balancer kit

BRV-SA

Anti-rotation torque reaction arms
SA compatible



When useful?

This is an anti-rotation torque tube optimized for the Articulated Support

- Both perpendicular and parallel tightening direction
- Vertical installation



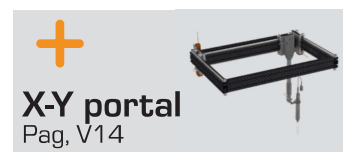
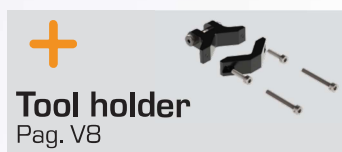
Features

- ✓ Carbon fiber layering optimized for torsional loads
- ✓ High smoothness
- ✓ Recirculating ball bushing

Complements:

- + Tool holder
- + Balancer Kit
- + Articulated Support
- + X-Y portals
- + Crane systems

Arm	BNP p/n	Max torque		L max		Stroke (S)		Weight	
								Arm	To balance
								Kg (Lb)	Kg (Lb)
BRV-SA15 450/150	030.0101.000	15	11.06	510	20.08	150	5.90	0,9 (1,98)	0,35 (0,77)
BRV-SA15 500/300	030.0102.000	15	11.06	710	27.95	300	11.81	1,1 (2,43)	0,50 (1,10)
BRV-SA40 450/150	030.0103.000	40	29.50	510	20.08	150	5.90	1,5 (3,31)	0,70 (1,54)
BRV-SA40 500/300	030.0104.000	40	29.50	760	29.92	300	11.81	1,9 (4,19)	1,00 (2,20)
BRV-SA40 1450/600	030.0105.000	40	29.50	1410	55.51	600	23.62	2,5 (5,51)	1,60 (3,53)
BRV-SA80 850/300	030.0106.000	80	59.00	810	31.89	300	11.81	2,9 (6,39)	1,50 (3,31)
BRV-SA80 1450/600	030.0107.000	80	59.00	1410	55.51	600	23.62	3,9 (8,60)	2,50 (5,51)



Standard purchase order: BRV-SA + tool holder+ SA



High torque BRV

Anti-rotation torque reaction arms
150 - 600 Nm

When useful?

- Both perpendicular and parallel tightening direction
- Vertical installation
- High torque power tools

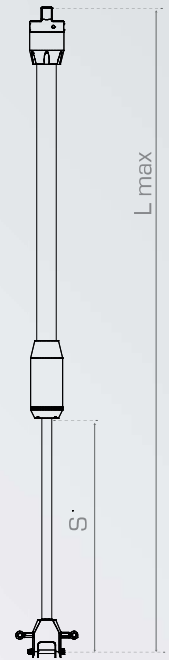


Features

- ✓ Carbon fiber layering optimized for torsional loads
- ✓ High smoothness
- ✓ Recirculating ball bushing
- ✓ Anti-rotation system

Complements:

- + Tool holder (custom)
- + Kit Balancers
- + Upper hinge kit
- + Brake kit



Arm	BNP p/n	Max torque		L max		Stroke (S)		Weight	
		Nm	f.lb	mm	in	mm	in	Arm	To balance
								Kg (Lb)	Kg (Lb)
BRV150 1600/600	030.0010.000	150	110,63	1600	63,00	600	23,62	11,00 (24,25)	5,00 (11,02)
BRV150 2100/900	030.0011.000	150	110,63	2160	85,04	900	35,43	13,00 (28,66)	6,00 (13,23)
BRV300 1600/600	030.0014.000	300	221,27	1700	67,00	600	23,62	20,00 (44,09)	5,50 (12,12)
BRV300 2100/900	030.0015.000	300	221,27	2310	90,94	900	35,43	21,50 (47,40)	6,50 (14,33)
BRV600 1600/600	030.0018.000	600	442,54	1740	68,50	600	23,62	23,00 (50,70)	8,50 (18,74)
BRV600 2100/900	030.0019.000	600	442,54	2340	92,12	900	35,43	27,00 (59,52)	11,00 (24,25)



Notes: BNP custom solutions can reach 1000 Nm max torque



Tool holder
Custom



Balancers kit
Pag. V10



Upper hinge kit
Pag. V15



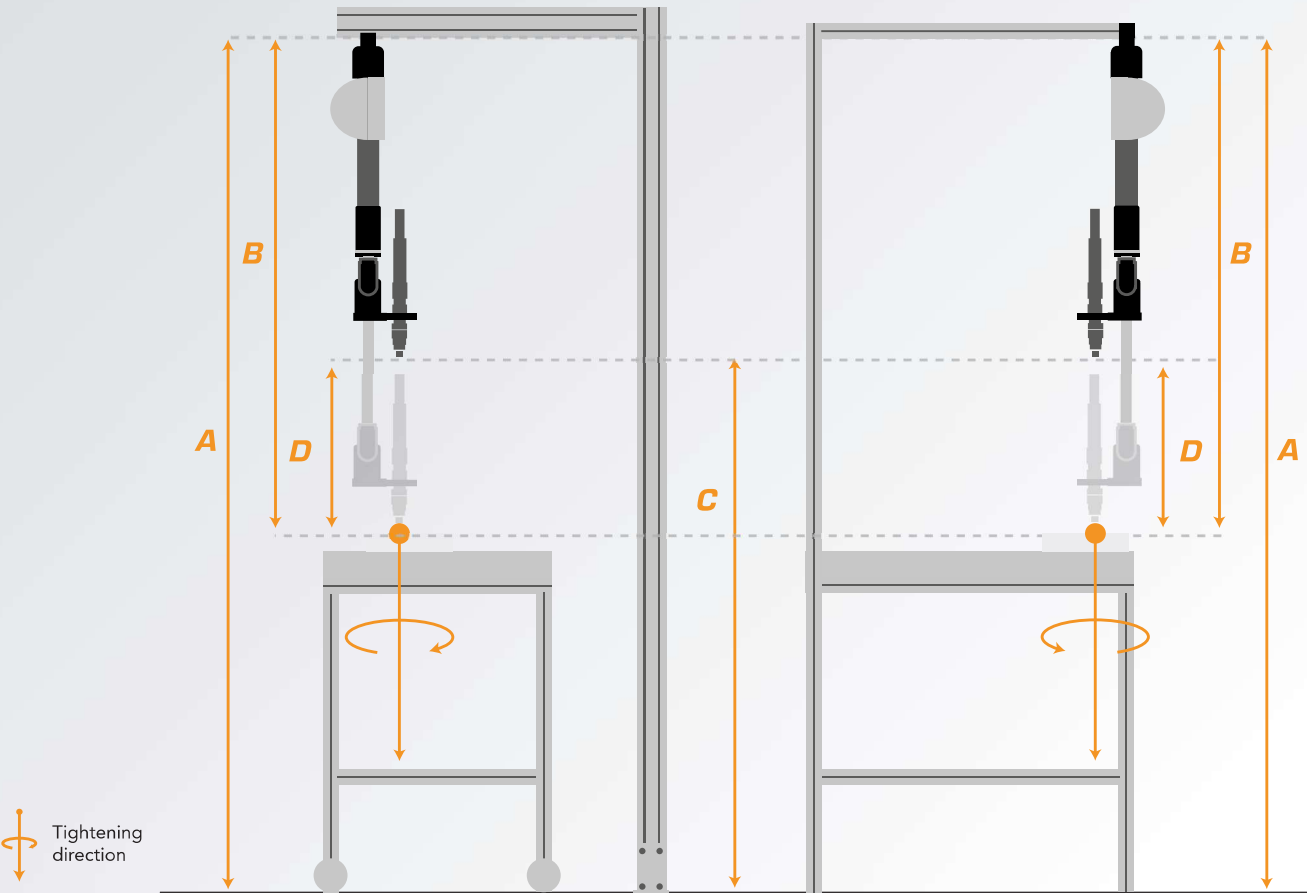
Brake kit
Pag. V16



Standard purchase order: High torque BRV + balancer kit + upper hinge kit + tool holder

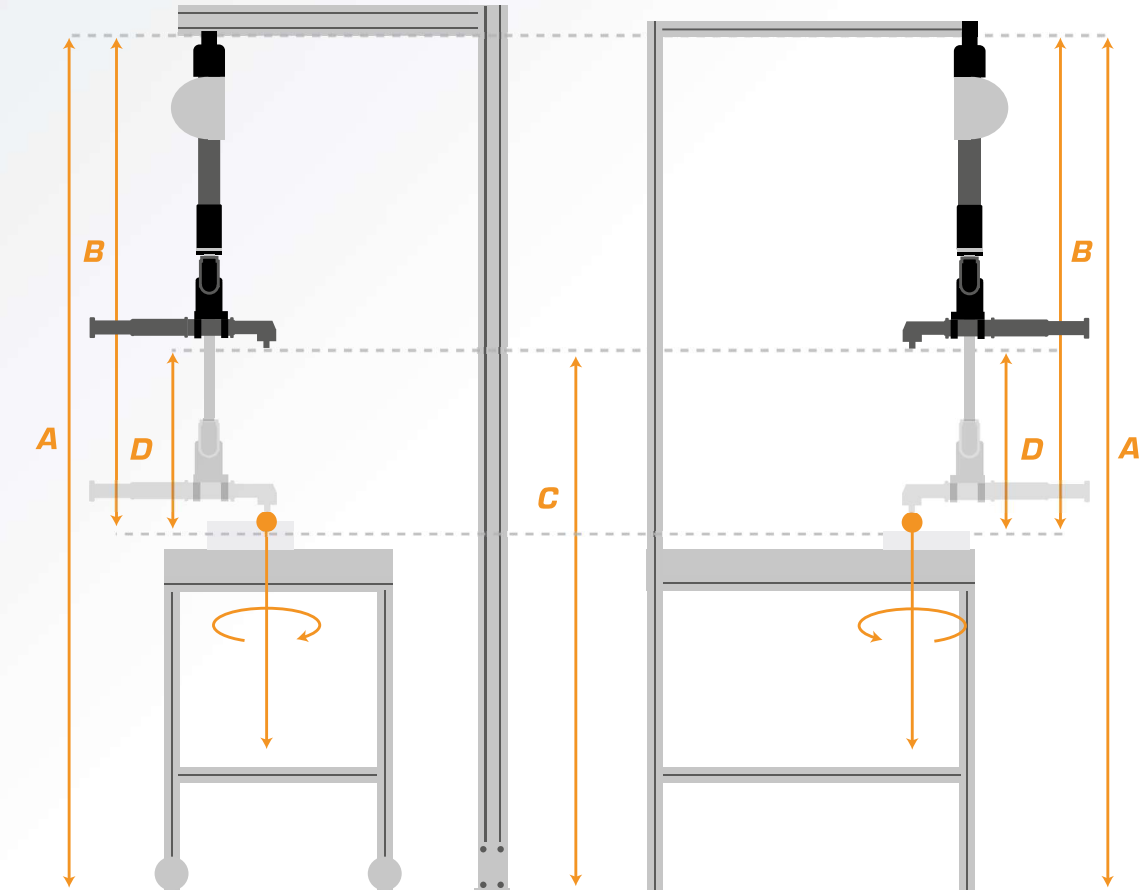
Ex. 5: Floor mounted BRV with straight screwdriver

Ex. 6: BRV mounted on workstation with straight screwdriver



Ex. 7: Floor mounted BRV with angle screwdriver

Ex. 8: BRV mounted on workstation with angle screwdriver



BRV Complements

- ✘ **TH-BRV**
Tool holder
- ✘ **THR**
Swivel Tool holder
- ✘ **Balancers and retractors kit**
- ✘ **Balancers and retractors**
- ✘ **Balancers and retractor's brackets**
- ✘ **Articulated support**
- ✘ **XY portal**
- ✘ **Brake kit**



TH-BRV

Tool holder

Functionality

Universal tool locking with:

- Tilting joint

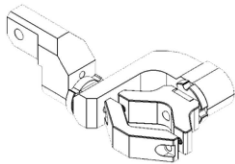


Compatibility

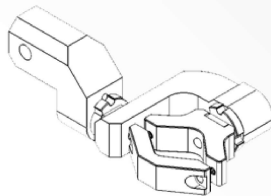
✓ Anti-rotation torque reaction arms (BRV).

	Compatibility	BNP p/n	Features	Grip diameter		Width mm	Weight Kg (lb)	Image Ref
				Ømin (mm)	Ømax (mm)			
BRV	BRV 15	070.0101.000	Straight tool holder	27	45	18	0,6 (1,32)	1
	BRV 15	070.0102.000	Angle tool holder	30	60	33,5	0,3 (0,66)	3
	BRV 40-80	070.0111.000	Straight tool holder	27	45	18	0,65 (1,43)	2
	BRV 40-80	070.0112.000	Angle tool holder	31	65	47	0,66 (1,46)	4

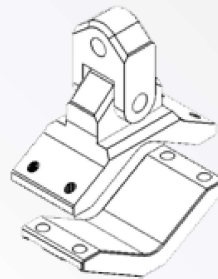
1



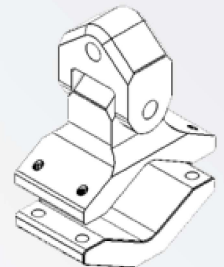
2



3



4



THR

Swivel tool holder



Functionality

Universal tool locking with:

- Tightening direction rotation around the tool axis



Compatibility

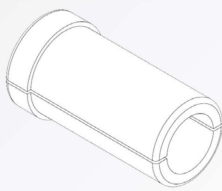
- ✓ Anti-rotation torque reaction arms (BRV)



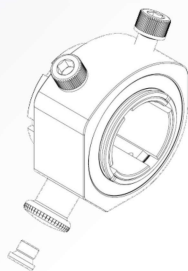
***Notes:** the adapter is included and custom designed. The interface is not included

	Compatibility	BNP p/n	Features	Grip diameter		Weight	Image
				Ømin (mm)	Ømax (mm)		
BRV	All arms 15÷80 Nm	070.0004.000	Swivel tool holder	20	35	0,45 (0,99)	2
	All arms 15÷150 Nm	070.0005.000	Swivel tool holder	40	55	1 (2,21)	3
	All arms	(*)	Adaptor	30 (*)	57 (*)	0,37 (0,82)	1
	BRV 15	070.0103.000	Interface	n/a	n/a	0,36 (0,79)	4
	BRV 40-80	070.0113.000	Interface	n/a	n/a	0,51 (1,12)	4

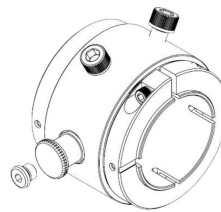
1



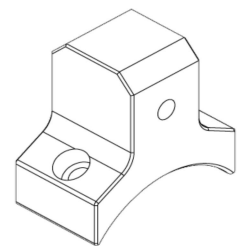
2



3



4



Retractor and balancers kit

Functionality

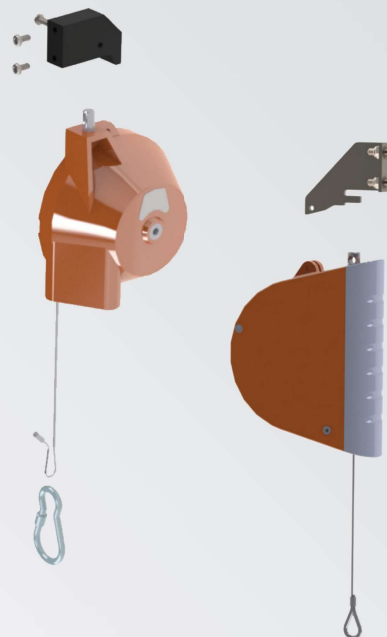
Retractors exert a return force on the tool. After use, the tool will be retracted to its initial position.

- Tool retraction

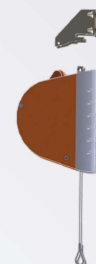
Balancers ensure a constant return force that scales the tool weight. After use, the tool remains in the same position it was left.

- Tool suspension

Kit includes the balancer or the retractor and the fixing bracket.



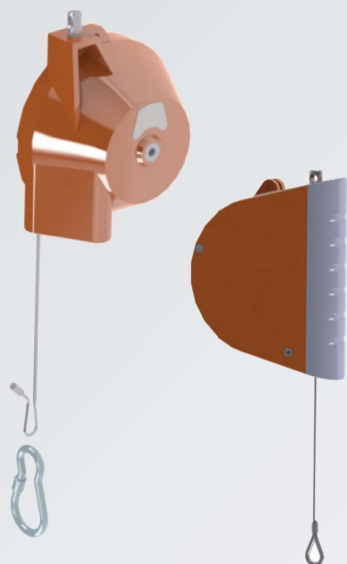
Retractor kit - BRV	Compatibility	BNP p/n	Model	Cable length	Payload	Amount
				mm	Kg (lb)	
	BRV	070.0351.000	Kit 7211080001	2500	0,5-2,0 (1,10- 4,4)	Single
	BRV	070.0352.000	Kit 7211080002	2500	1,5-3,0 (3,31-6,62)	Single
	BRV	070.0353.000	Kit 7211080005	1400	3,0-5,5 (6,62-12,3)	Single
	BRV	070.0354.000	Kit 7221080001	3000	2,0-5,0 (4,4-11,03)	Single
	BRV	070.0355.000	Kit 7221080002	3000	4,0-8,0 (8,82-17,64)	Single
	BRV	070.0356.000	Kit 7221080003	3000	7,0-10,0 (15,4-22,05)	Single
	BRV	070.0357.000	Kit 7221080004	3000	10,0-14,0 (22,05-30,87)	Single



Balancer kit - BRV			Cable length	Payload		
	Compatibility	BNP p/n	mm	Kg (lb)	Model	Amount
	BRV	070.0358.000	1600	0,4-1,2 (0,88-2,65)	KIT 7228000001	Single
	BRV	070.0359.000	1600	1,2-2,6 (2,65-5,73)	KIT 7228000002	Single
	BRV	070.0360.000	1600	2,6-3,8 (5,73-8,38)	KIT 7228000003	Single
	BRV	070.0361.000	1600	3,8-5,2 (8,38-11,47)	KIT 7228000004	Single
	BRV	070.0362.000	1600	5,2-6,5 (11,47-14,33)	KIT 7228000005	Single
	BRV	070.0363.000	2000	6-10 (13,2-22,05)	KIT 7230000003	Single
	BRV	070.0364.000	2000	9-14 (8,82 - 19,85)	KIT 7230000004	Single



Retractors and balancers



Functionality

BRT arms can be associated with both retractors and balancers.

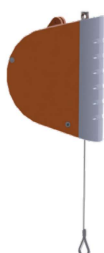
Installation bracket is required for BRT-V and BRT-P telescopic arms.

Retractors exert a return force on the tool. After use, the tool will be retracted to its initial position.

Balancers ensure a constant return force that scales the tool weight. After use, the tool will remain in the same position it was left.

	BNP p/n	Payload	Cable length	Weight	P/n Kromer	Bracket
Retractor (A) - BRV		Kg (lb)	mm	Kg (lb)		Image page V12
	070.0918.000	0,3-1,5 (0,66-3,51)	1600	0,5 (1,10)	7200 0800 01	-
	070.0919.000	1,2-2,5 (2,65-5,51)	1600	0,6 (1,32)	7200 0800 02	-
	070.0920.000	0,5-2,0 (1,10-4,4)	2500	0,8 (1,76)	7211 0800 01	G
	070.0921.000	1,5-3,0 (3,31-6,62)	2500	0,9 (1,98)	7211 0800 02	G
	070.0922.000	3,0-5,5 (6,62-12,3)	1400	1 (2,21)	7211 0800 05	G
	070.0923.000	2,0-5,0 (4,4-11,03)	3000	3,5 (7,72)	7221 0800 01	H
	070.0924.000	4,0-8,0 (8,82-17,64)	3000	3,8 (8,38)	7221 0800 02	H
	070.0925.000	7,0-10,0 (15,4-22,05)	3000	3,8 (8,38)	7221 0800 03	H
070.0926.000	10,0-14,0 (22,05-30,87)	3000	4 (8,82)	7221 0800 04	H	
Balancers (B) - BRV		Kg (lb)	mm	Kg (lb)		Image page V12
	070.0927.000	0,4-1,2 (0,88-2,65)	1600	1,3 (2,87)	7228 0000 01	I
	070.0928.000	1,2-2,6 (2,65-5,73)	1600	1,4 (3,09)	7228 0000 02	I
	070.0929.000	2,6-3,8 (5,73-8,38)	1600	1,5 (3,31)	7228 0000 03	I
	070.0930.000	3,8-5,2 (8,38-11,47)	1600	1,5 (3,31)	7228 0000 04	I
	070.0931.000	5,2-6,5 (11,47-14,33)	1600	1,5 (3,31)	7228 0000 05	I
	070.0932.000	4,5-7,0 (9,92-15,44)	2000	3,3 (7,28)	7230 0000 02	-
	070.0933.000	6,0-10,0 (13,23-22,05)	2000	3,4 (7,50)	7230 0000 03	L
	070.0934.000	9,0-14,0 (19,85-30,87)	2000	3,6 (7,94)	7230 0000 04	L
070.0935.000	13,0-17,0 (28,6-37,49)	2000	3,8 (8,38)	7230 0000 05	-	

A



B



Brackets

Installation brackets

Functionality

BNP arm Installation brackets for Kromer balancer and retractor.



	Compatibility	Image	BNP p/n
BRV	BRV	G	070.1032.000
	BRV	H	070.1033.000
	BRV	I	070.1034.000
	BRV	L	070.1035.000

G



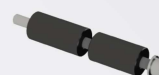
I



H



L



SA Articulated support



Functionality

Combined with BNP arm, it allows:

- Installation without aerial structures
- Working area increased



Features

- ✓ Also available with encoders kit
- ✓ Carbon fiber for models up to 80 Nm -1000 mm

Accessories:

- + Encoder kit

	Descriptions	BNP p/n	Max torque	Max radius	Payload	Weight
BRV - SA	SA80 600	090.0401.000	80	600	10 (22,05)	0,75 (1,65)
	SA80 800	090.0402.000	80	800	10 (22,05)	0,78 (1,72)
	SA80 1000	090.0403.000	80	1000	10 (22,05)	0,8 (1,76)
	SA80 1500 Steel	090.0451.000	80	1500	10 (22,05)	16 (35,28)
	SA80 2000 Steel	090.0452.000	80	2000	10 (22,05)	19 (41,90)
	SA80 2500 Steel	090.0453.000	80	2500	10 (22,05)	21 (46,31)
	SA150 1000 Steel	090.0460.000	150	1000	30 (66,15)	22 (48,51)
	SA150 1500 Steel	090.0461.000	150	1500	30 (66,15)	25 (55,13)
	SA150 2000 Steel	090.0462.000	150	2000	30 (66,15)	28 (61,74)
	SA150 2500 Steel	090.0463.000	150	2500	30 (66,15)	31 (68,36)



Encoders kit

Encoders kit can be mounted on SA to allow tool position detection.

- X and Y axis position detections (2 encoders kit)



Kit	BNP p/n	Encoders number
Relative Encoder kit - Posix	090.0510.000	2
Absolute Encoder kit - Posix PRO	090.0511.000	2



Notes: also available in custom solutions (steel or carbon fiber), up to 300 Nm.